



Aperture Card PLOTSTATION

APERTURE CARD
MICROFICHE
ROLL FILM
COM PLOTTER

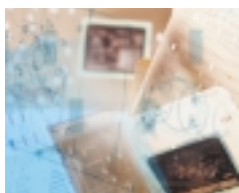
COM – Computer Output to Microfilm. The ACO-2 is a complete aperture card plotting solution providing all the hardware and PLOTCARD software to produce full archival quality imaged, punched and printed 35mm aperture cards from electronic images or CAD plot files.

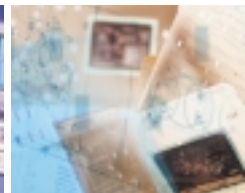
PLOTCARD is a simple, quick and efficient application package enabling you to select files for plotting from a database or plot file directory, view the image on screen prior to plotting and assign priorities to files in the queue. It can even accept files automatically from one or more CAD workstations and remote job entry terminals at the same time.

A Plotstation from Wicks and Wilson covers everything that is required for individual or batch production of complete industry standard aperture cards with unsurpassed image quality.



Wicks and Wilson





Aperture Card Scanstations

Microfiche Scanstation

Roll Film Scanstations

Aperture Card Plotstation

'Excellence by design'

PRODUCT SPECIFICATION - PLOTSTATION

Model Number	ACO-2	
Camera Card Input Cassette	250 Cards	
Output Hopper	250 Cards	
Reject Hopper	100 Cards	
Punch Data Capability	12 rows x 80 columns	
Print Data Capability	60 or 80 positions	
Resolution	User selectable between 100 and 400 dpi	
Maximum Image Area	1.207" x 1.625" (30.66mm x 41.28mm)	
Image Position	Centred with programmable offset	
Laser	2mW low power helium-neon	
Warm Up Time	3 minutes	
File Types	Raster	CCITT G4, CCITT G3, CALS, TIFF
	Vector	Calcomp 906, Calcomp 907, HPGL, HPGL2
Throughput (average)	35 cph at 200 dpi, 25 cph at 400 dpi	
Power Line Voltage	120/220/240 volts +5%	
Power Line Frequency	50/60 Hz	
Power Consumption	Standby	350 VA
	Peak	1500 VA
Operating Temperature (ambient)	15°C to 27°C (60° - 80°F)	
Operating Humidity	30% to 70% RH(non-condensing)	
Measurements	50" x 21" x 26" (1280mm x 530mm x 650mm)	
Weight	231 lbs (105 kg)	
Agency Approvals	CE, BSI, UL, FCC, VDE	
Operating System	Window 95, 98 and optional NT	
Controller PC	(minimum requirement) see website (www.wwl.co.uk) for current specification	

Wicks and Wilson Limited, Morse Road, Basingstoke, Hampshire, RG22 6PQ, United Kingdom
 Telephone: +44 (0)1256 842211 Fax: +44 (0)1256 840997 Email: sales@wwl.co.uk Web: www.wwl.co.uk

Wicks and Wilson Limited pursues a policy of continuous product improvement and reserves the right to change these specifications without notice.
 All Wicks and Wilson products are distributed worldwide. For a complete list of distributors please visit our website at www.wwl.co.uk